



Daily Technical Trader - Qatar

April 13, 2026



QE Index Summary

	12 Apr 2026	9 Apr 2026	Chg
Index	10,630	10,642	-0.11%
Value QR (mn)	361	454	-20.51%
Trades	22,733	28,277	-19.61%
Volume (mn)	157	160	-2.08%
Stocks Traded	54	54	0.00%
Gainers	21	9	133.33%
Losers	30	43	-30.23%
Unchanged	3	2	50.00%

Source: Qatar Stock Exchange

Weekly Market Recommendations:

Time Frame	Trend	Current Level	Target	Support	Resistance
Short-term (12Apr -16Apr)	↓	10,629.80	10,750	10,300	10,880
Medium-term (01Apr- 30Apr)	↓	10,629.80	10,000	10,000	11,000

Weekly Company Recommendations:

Company Name

Given the current geopolitical situation, we will refrain from publishing stock recommendations for now until the situation stabilizes

Daily Company Recommendations:

Company Name	Current Price	View	Time Frame	Support	Resistance
--------------	---------------	------	------------	---------	------------

Given the current geopolitical situation, we will refrain from publishing stock recommendations for now until the situation stabilizes

List of Stocks Close to Technical Levels

Companies Closest to Resistance

Company	Ticker	Mcap (QRmn)	Price	Resistance
Qatar Fuel Company	QFLS	14,794.5	14.88	14.885
Barwa Real Estate Company	BRES	9,175.6	2.358	2.366
Mesaieed Petrochemical Holding	MPHC	15,226.6	1.212	1.221
Baladna	BLDN	2,675.7	1.248	1.260
Masraf Al Rayan	MARK	20,320.5	2.185	2.201

Companies Closest to Support

Company	Ticker	Mcap (QRmn)	Price	Support
Masraf Al Rayan	MARK	20,320.5	2.185	2.183
Baladna	BLDN	2,675.7	1.248	1.243
Ezdan Holding Group	ERES	22,731.9	0.857	0.851
Gulf International Services	GISS	3,986.3	2.145	2.135
Qatar Aluminium Manufacturing Company	QAMC	8,833.3	1.583	1.572

Companies with RSI over 70 (Overbought)

Company	Ticker	Mcap (QRmn)	Price	RSI
Dlala Brokerage & Investments Holding Co QSC	DBIS	207.5	1.090	67.24
Mesaieed Petrochemical Holding Co	MPHC	15,226.6	1.212	65.36
Qatar National Cement Co QSC	QNCD	2,050.1	3.137	61.50
Zad Holding Co	ZHCD	4,245.2	14.77	53.88
Qatar General Insurance & Reinsurance Co SAQ	QGRI	1,287.2	1.471	53.78

Companies with RSI below 30 (Oversold)

Company	Ticker	Mcap (QRmn)	Price	RSI
Gulf International Services QSC	GISS	3,986.3	2.145	29.87
Qatar Oman Investment Co QSC	QOIS	130.5	0.725	30.58
Al Meera Consumer Goods Co QSC	MERS	2,855.2	13.86	31.31
Mekdam Holding group	MKDM	408.0	2.400	33.55
United Development Co QSC	UDCD	3,116.0	0.880	33.84

Source: Refinitiv, QNBFS Research

Outlook

The QE Index lost around 12 points on Sunday. The RSI line is staying above the 50 zone. Key support for the Index remains near 10,300, while resistance is expected around 10,880.

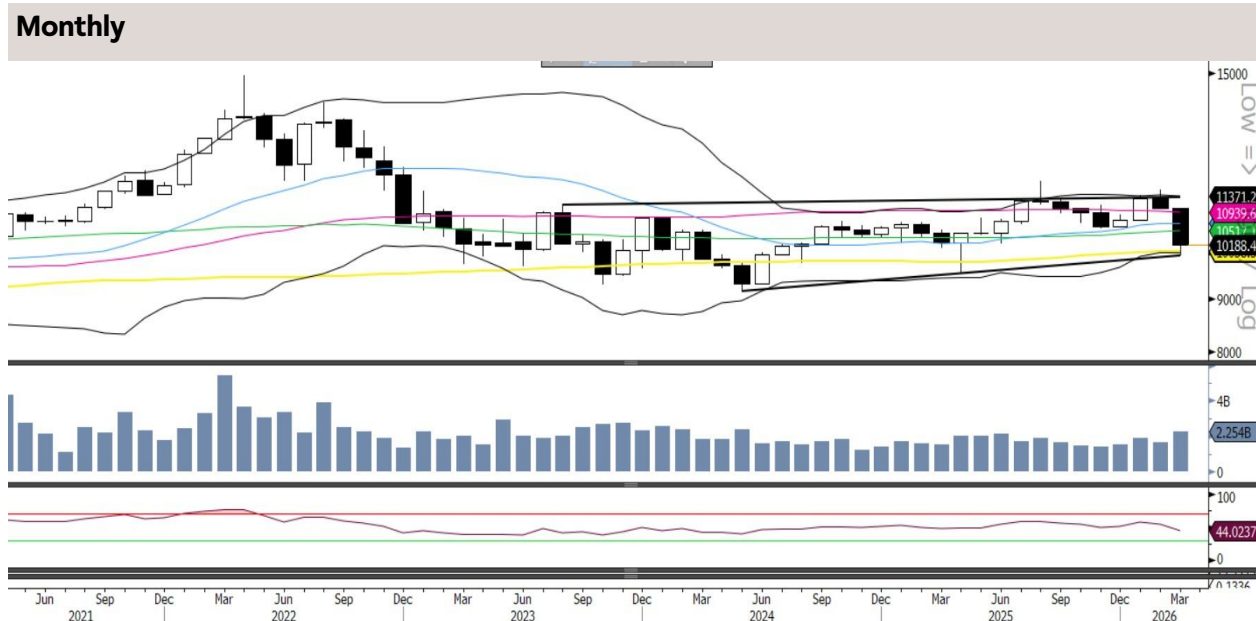
QE Index- Technical Charts



Source: Bloomberg, QNBFS Research



Source: Bloomberg, QNBFS Research



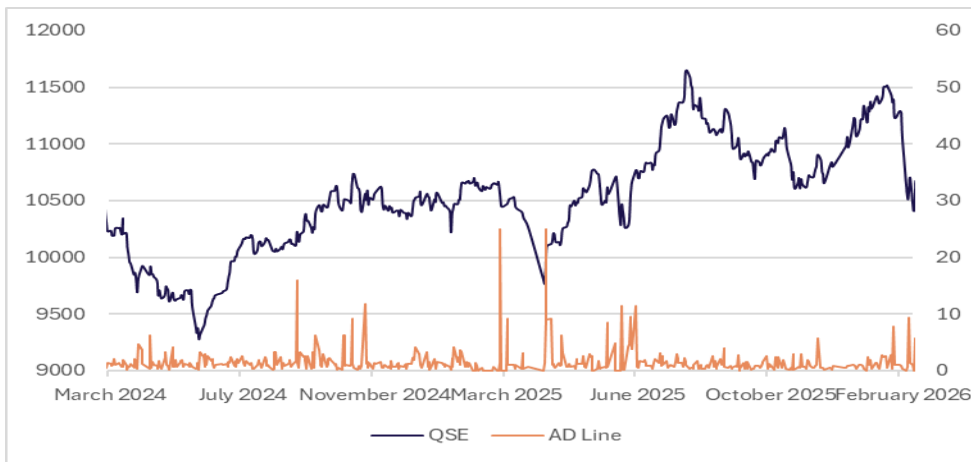
Source: Bloomberg, QNBFS Research

The QE Index slid lower for the second consecutive session on the back of profit-booking. The Index has been witnessing selling pressure, however; the index is showing a bounce back over the past few days, on the expectations of some relief on geopolitical tensions. Meanwhile, the Index bounced back after testing its intraday low near 10,490 and recouped some of its losses. Acceptance above 10,760 is required for an upside. Support is seen near 10,510.

The QE Index gained for the second straight week and continued its rebound, on the back of news of temporarily easing of geopolitical tensions. Meanwhile, the Index after testing its weekly low near 10,150, bounced back sharply and reclaimed its 100-WMA currently near 10,570. However, the Index still needs to surpass its 200-WMA currently near 10,760, followed by 50-MWA near 10,880, to attract buying interest, until then it may consolidate or test 10,300.

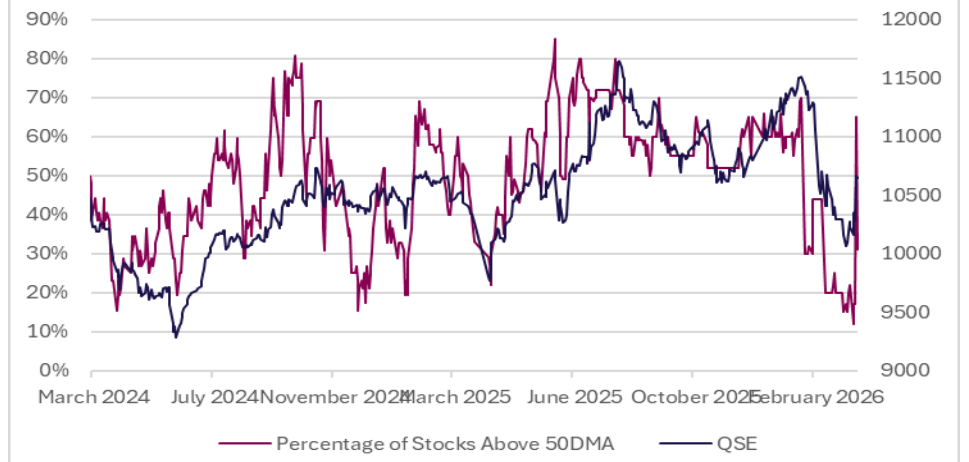
The QE Index slid lower on the back of geopolitical tensions and news flow. The Index slipped below both its 50-MWA currently near 10,950, and 100-MWA 10,520 in a single swoop, indicating the pressure is likely to stay further, until the situation stabilizes. However, the index managed to protect its 200-MWA currently near 10,030, which is the only positive takeaways. On the higher side, any acceptance above 100-MWA can test its 50-MWA. However, any sustained weakness below its 200-MWA can drag it down to test 9,550.

Advance/Decline Line



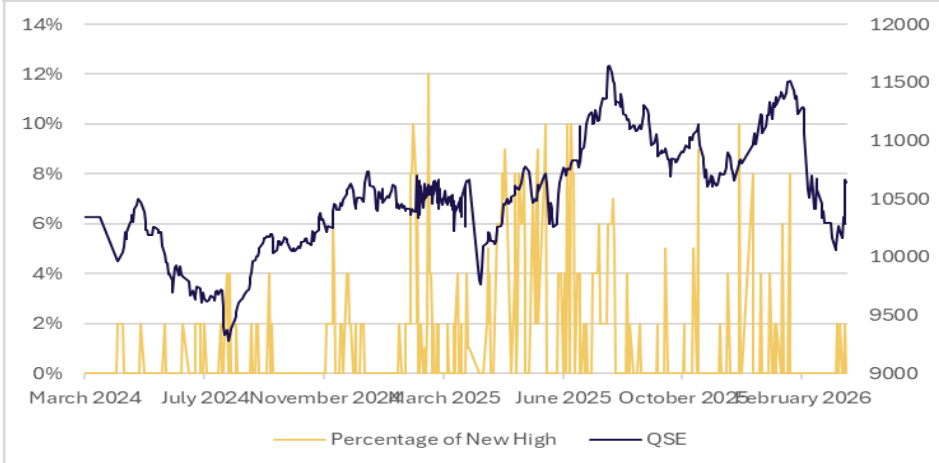
Source: Refinitiv, QNBFS Research

Percentage of Stocks Above 50-day Moving Average



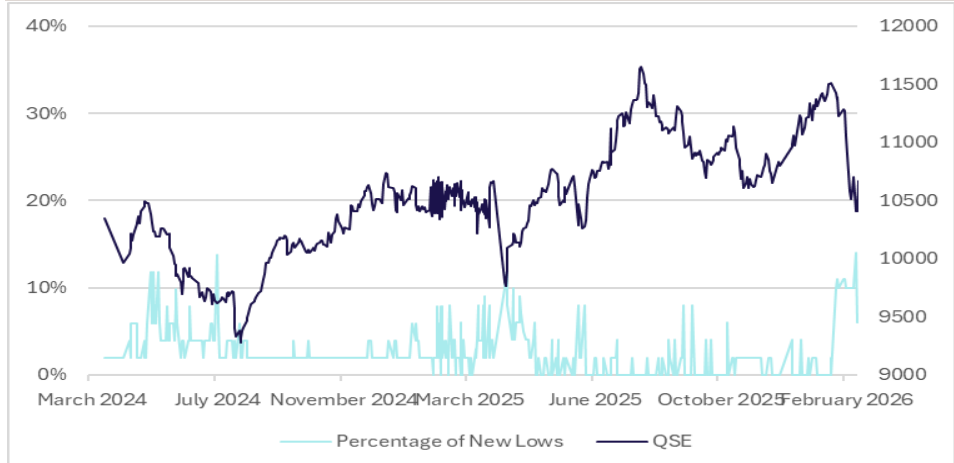
Source: Refinitiv, QNBFS Research

Percentage of New Highs to Total Market



Source: Refinitiv, QNBFS Research

Percentage of New Lows to Total Market

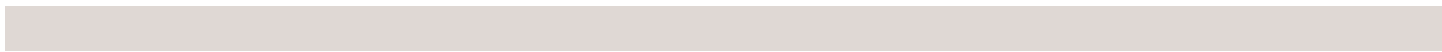


Source: Refinitiv, QNBFS Research

Daily Company Recommendations



Source: Bloomberg, QNBFS Research



Source: Bloomberg, QNBFS Research

Weekly Company Recommendations

Source: Bloomberg, QNBFS Research

Source: Bloomberg, QNBFS Research

- Short Term

Source: Bloomberg, QNBFS Research

-Medium Term

Source: Bloomberg, QNBFS Research

Contacts

QNB Financial Services Co. W.L.L.

Contact Center: (+974)4476 6666

info@qnbfs.com.qa

Doha, Qatar

Shahan Keushgerian

Senior Research Analyst

shahan.keushgerian@qnbfs.com.qa

Saugata Sarkar, CFA, CAIA

Head of Research

saugata.sarkar@qnbfs.com.qa

Phibion Makuwerere, CFA

Senior Research Analyst

phibion.makuwerere@qnbfs.com.qa

Dana Saif Al Sowaidi

Research Analyst

dana.alsowaidi@qnbfs.com.qa

Disclaimer and Copyright Notice: This publication has been prepared by QNB Financial Services Co. W.L.L. ("QNBFS") a wholly-owned subsidiary of Qatar National Bank (Q.P.S.C.). QNBFS is regulated by the Qatar Financial Markets Authority and the Qatar Exchange. Qatar National Bank (Q.P.S.C.) is regulated by the Qatar Central Bank. This publication expresses the views and opinions of QNBFS at a given time only. It is not an offer, promotion or recommendation to buy or sell securities or other investments, nor is it intended to constitute legal, tax, accounting, or financial advice. QNBFS accepts no liability whatsoever for any direct or indirect losses arising from use of this report. Any investment decision should depend on the individual circumstances of the investor and be based on specifically engaged investment advice. We therefore strongly advise potential investors to seek independent professional advice before making any investment decision. Although the information in this report has been obtained from sources that QNBFS believes to be reliable, we have not independently verified such information and it may not be accurate or complete. QNBFS does not make any representations or warranties as to the accuracy and completeness of the information it may contain, and declines any liability in that respect. For reports dealing with Technical Analysis, expressed opinions and/or recommendations may be different or contrary to the opinions/recommendations of QNBFS Fundamental Research as a result of depending solely on the historical technical data (price and volume). QNBFS reserves the right to amend the views and opinions expressed in this publication at any time. It may also express viewpoints or make investment decisions that differ significantly from, or even contradict, the views and opinions included in this report. This report may not be reproduced in whole or in part without permission from QNBFS.